

Buddy Poppy Pattern - VFW Post 577

This poppy pattern uses two crocheted flower petal circles to create a three-dimensional flower. The pattern will allow the flower to hold its shape and stand up to the Oklahoma rain and wind when used for outside displays.

~~~~~  
**Supplies:**

1 Crochet hook (I / 5.50 MM)  
1 yarn needle

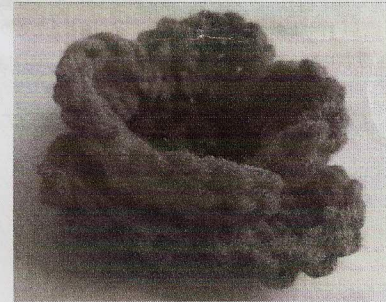
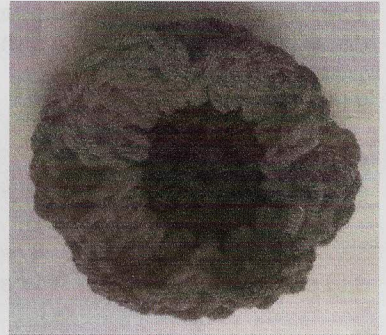
Yarn:

1 **Cherry Red** - Red Heart Super Saver (7 oz/364 yards)  
1 **Black** - Red Heart Super Saver (7 oz/364 yards)

Note: One skein of red and black makes about 20-25 poppies.  
Flower size is 4 inches across.

~~~~~  
Stitches used:

Magic circle or chain stitch
Slip stitch
Single crochet
Triple crochet
~~~~~



**Part 1 - bottom flower petal circle:**

With **RED YARN**

**Row 1:**

Create a magic circle - or - chain four and slip stitch in first chain to make a loop.

In the loop crochet 8 single crochet stitches.  
Slip stitch in the first single crochet. (8 stitches)

**Row 2:**

Chain 1 and single crochet in first stitch of row one,  
Single crochet 2 stitches in each of the next 7 single crochet of row one.  
Then slip stitch in the chain. (16 stitches)

**Row 3:**

Create a petal of the flower on the next 4 stitches of row 2.  
This flower petal will be done 4 times to create the flower petal circle.

\*In the first stitch make a slip stitch and 2 chain stitches.  
Then in each of the next 3 stitches make 2 triple crochet.\*

This completes a petal and you will be ready to make the next petal.

Repeat \* three more times to create 4 petals on the poppy.

Slip stich in base of first 2 chain stitches.  
Cut the yarn, tie off and work the tail of the yarn into the poppy petal.

# Buddy Poppy Pattern - VFW Post 577

## Part 2 - top flower petal circle:

The Part 2 flower is made the same as the Part 1 flower except the first 2 rows are done in black yarn with the 3<sup>rd</sup> row in red yarn.

### With BLACK YARN

#### Row 1:

Create a magic circle - or - chain four and slip stitch in first chain to make a loop.

In the loop crochet 8 single crochet stitches.

Slip stitch in the first single crochet. (8 stitches)

#### Row 2:

Chain 1 and single crochet in first stitch of row one,

Single crochet 2 stitches in each of the next 7 single crochet of row one.

Then slip stitch in the chain. (16 stitches)

Cut yarn leaving a 1 inch long tail.

### With RED YARN

#### Row 3:

*Note: Crochet over the loose black & red yarn tail as you create the first red petal.*

Create a petal of the flower on the next 4 stitches of row 2.

This flower petal will be done 4 times to create the flower petal circle.

\*In the first stitch make a slip stitch and 2 chain stitches.

Then in each of the next 3 stitches make 2 triple crochet.\*

This completes a petal and you will be ready to make the next petal.

Repeat \* three more times to create 4 petals on the poppy.

Slip stitch in base of first 2 chain stitches.

Cut the yarn, tie off and work the tail of the yarn into the poppy petal.

## Join the 2 flower parts together:

### With BLACK YARN

Thread the yarn needle with about 10 inch of black yarn.

Place flower parts 1 & 2 together with the black centered petals on top.

Using the threaded needle sew in the black area to join the two flower parts.

On the back side of flower tie off the thread and work yarn tail into back of flower.

